

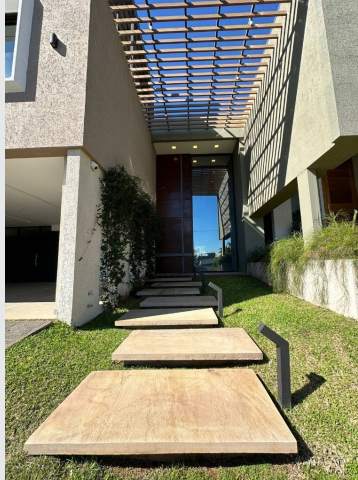


**Estela Sambuchetti
González**

CENTURY 21.

Select

ID: 23558
estela.sambuchetti@c21.com.py
+595994973744



House for Rent

barrio cerrado don david 02 Luque, Central



Rent: US\$ 3,800

Property type: Home

Operation: Rent

- **Land:** 674.0 sqm
- **Building:** 450.0 sqm
- **Front measurement:** 18.0 m
- **Bedrooms:** 3
- **Bathrooms:** 5
- **Half Baths:** 1
- **Parking lots:** 3
- **Stories:** 2
- **Kitchen:** Kitchen
- **Land:** regular
- **Condition:** Excellent
- **Construction Quality:** Luxury
- **environments:** 10

- Pool
- Jacuzzi
- Área de Servicio

- Pets Allowed
- Equipped kitchen
- Private pool

- Baño Privado
- Lavadora
- Aire Acondicionado

- Parking lot
- Área Social
- Estacionamiento bajo techo

- Furnished

- Dressing room

- Estacionamiento para Visitas

- Vista Panorámica
- Tipo Vista: Ciudad

- Estilo de Vida: Ciudad

Property status

State: Excellent

Age: 4

Without Mortgage: Yes

Description

Very close to Asunción, steps from the airport, we find this magnificent residence fully equipped and furnished. Excellent environment, in a closed neighborhood with a lot of tranquility but minutes from the corporate area.

LOW LEVEL

- Double height social area
- Living room, dining room and integrated social kitchen with refrigerator and oven, dishwasher
- Social bathroom

TOP FLOOR

- 3 bedrooms: 1 double en suite with dressing room, jacuzzi, 2 bedrooms with double beds en suite
- 1 desk space
- 1 large room
- TERRACE

YARD

- Quincho with grill
- Pool
- Bathroom

SERVICE AREA

- Kitchen equipped with oven and refrigerator
- Laundry room with washing machine
- Bedroom with 2-story bed + chest of drawers
- Bathroom

PARKING FOR 3 VEHICLES

Location

barrio cerrado don david 02 , Luque, Central

References

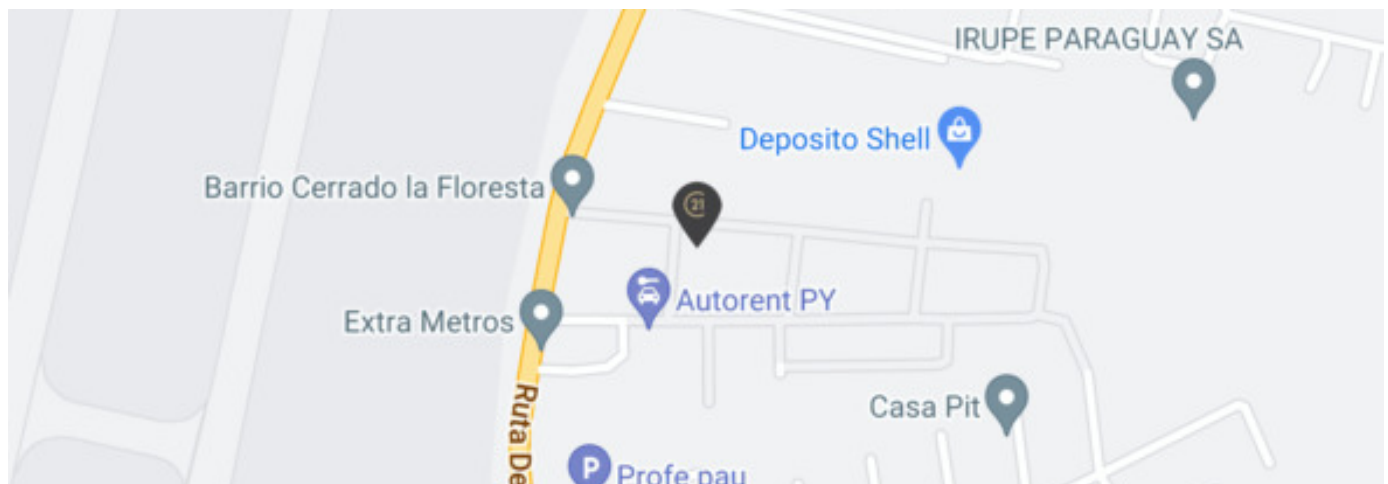
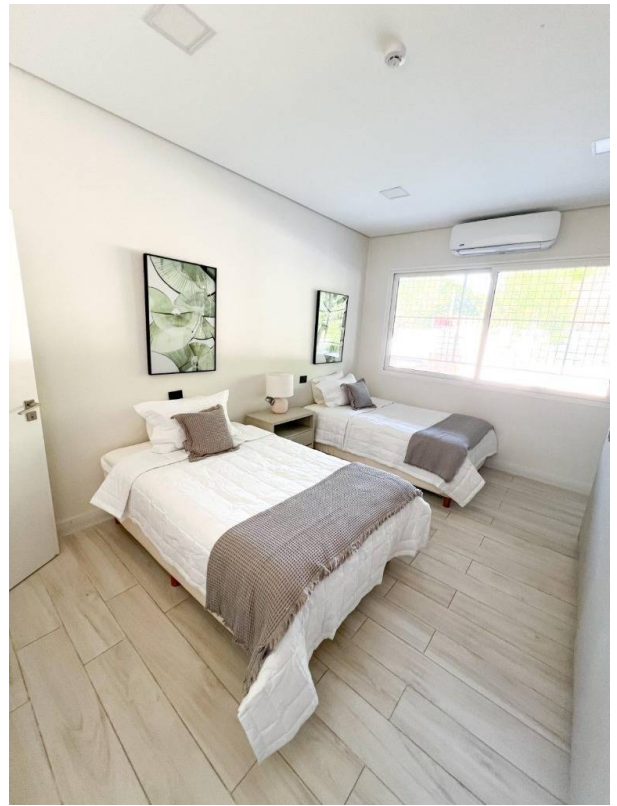
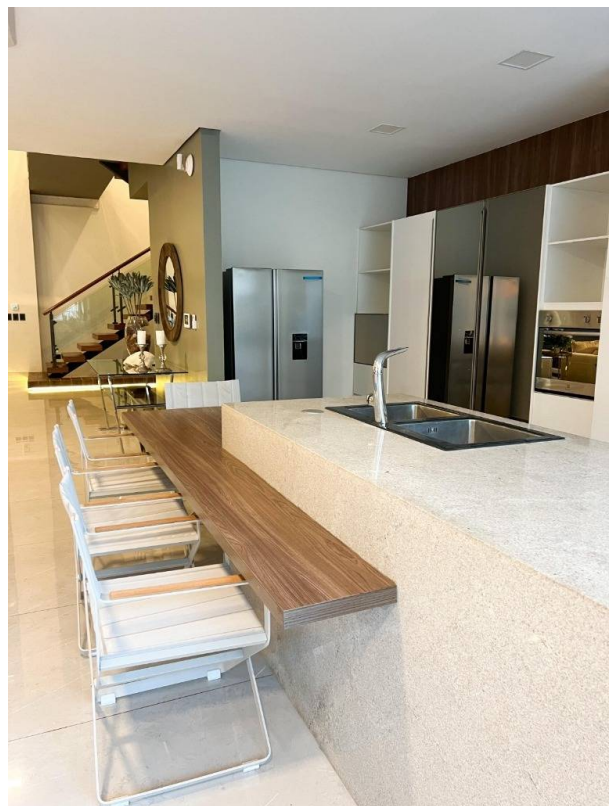
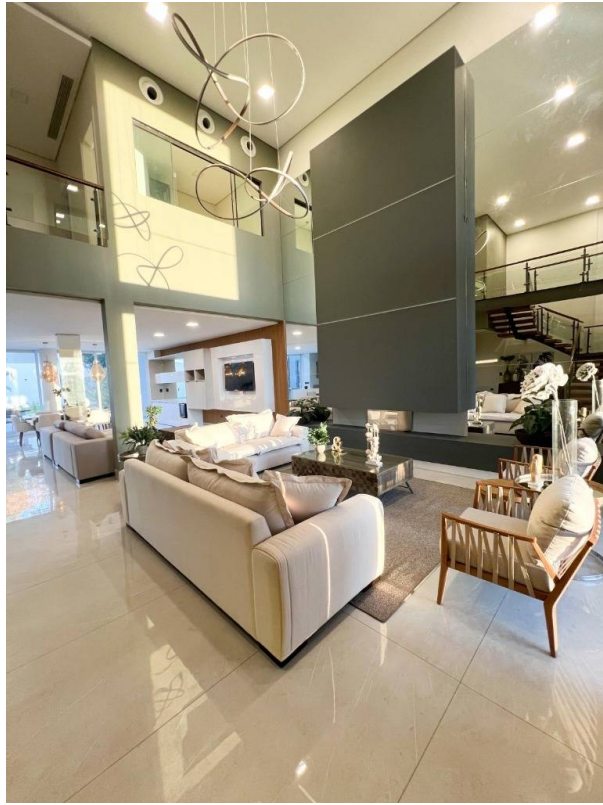
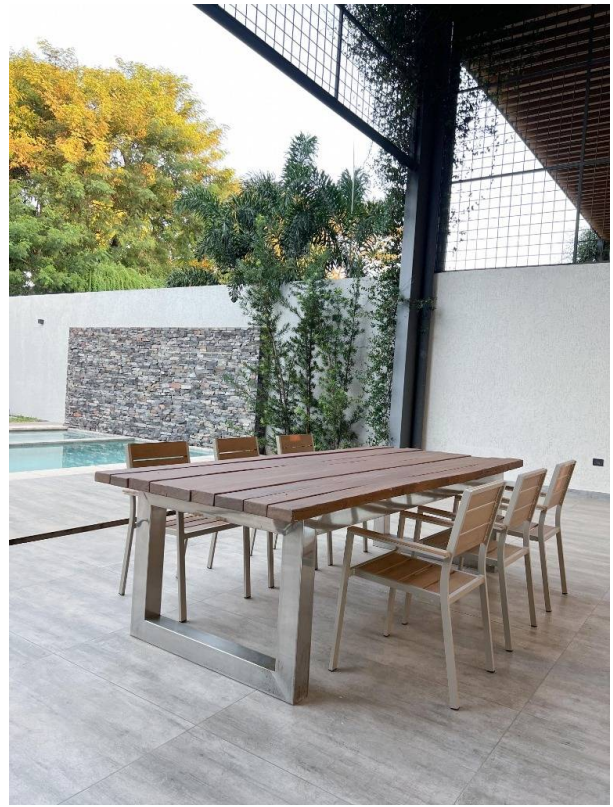


Photo Catalog









Alfredo Seiferheld c/ Padre Buenavertura, Paseo Adensam, Tembetary, Asunción
T 0992295903 | select@c21.com.py | www.century21.com.py

Property subject to availability.

Price subject to change without notice.

The sending of this file does not commit the parties to the subscription of any legal document. The information and measurements are approximate and must be confirmed with the relevant documentation.