



Annette Kraemer  
Velazquez

**CENTURY 21.**

Alma

ID: 23502  
annette.kraemer@c21.com.py  
+595981114169



**Gated community for Rent**

grupo habitacional aeropuerto, itaipu 49 Ytay, Asunción



**Rent: G 5,500,000**

**Property type: Gated community**

**Operation: Rent**

- |   |  |
|---|--|
| <ul style="list-style-type: none"> <li>• <b>Land:</b> 450.0 sqm</li> <li>• <b>Building:</b> 350.0 sqm</li> <li>• <b>Front measurement:</b> 15.0 m</li> <li>• <b>Background measurement:</b> 30.0 m</li> <li>• <b>Bedrooms:</b> 4</li> <li>• <b>Bathrooms:</b> 3</li> <li>• <b>Parking lots:</b> 4</li> <li>• <b>Stories:</b> 1</li> </ul> | <ul style="list-style-type: none"> <li>• <b>Kitchen:</b> Kitchen</li> <li>• <b>sqft Garden:</b> 100</li> <li>• <b>Land:</b> regular</li> <li>• <b>Condition:</b> Very good</li> <li>• <b>Construction Quality:</b> Middle</li> <li>• <b>Office area:</b> 1</li> <li>• <b>Showers:</b> 3</li> <li>• <b>environments:</b> 5</li> </ul> |
|---|--|

- |                |                          |
|----------------|--------------------------|
| • Pets Allowed | • Estilo de Vida: Ciudad |
|----------------|--------------------------|

**Property status**

State: Very good  
Age:  
Without Mortgage: Yes

**Description**

It has 4 bedrooms, 1 en suite  
3 bathrooms  
An office  
Equipped kitchen  
Large patio  
Parking lot  
One block from Madame Lynch Avenue.  
10 minutes from the corporate axis.

## Location

grupo habitacional aeropuerto, itaipu 49 , Ytay, Asunción

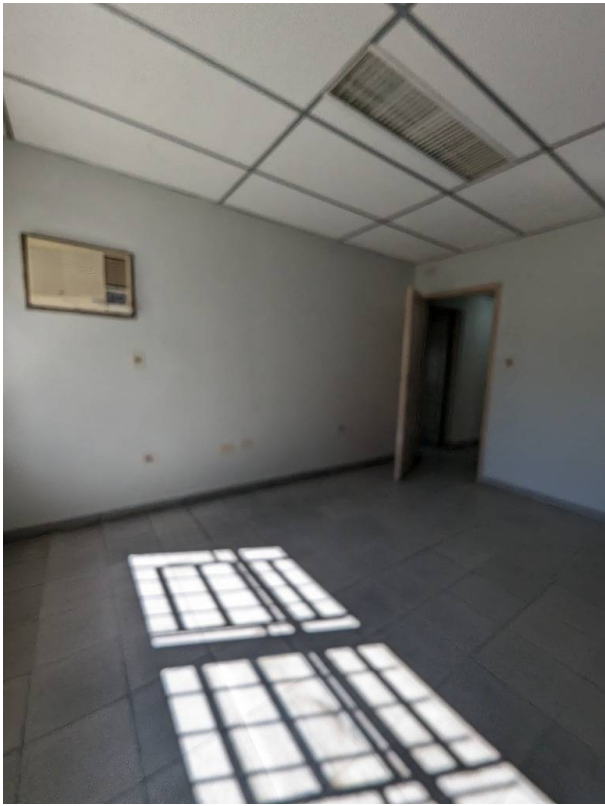
## References

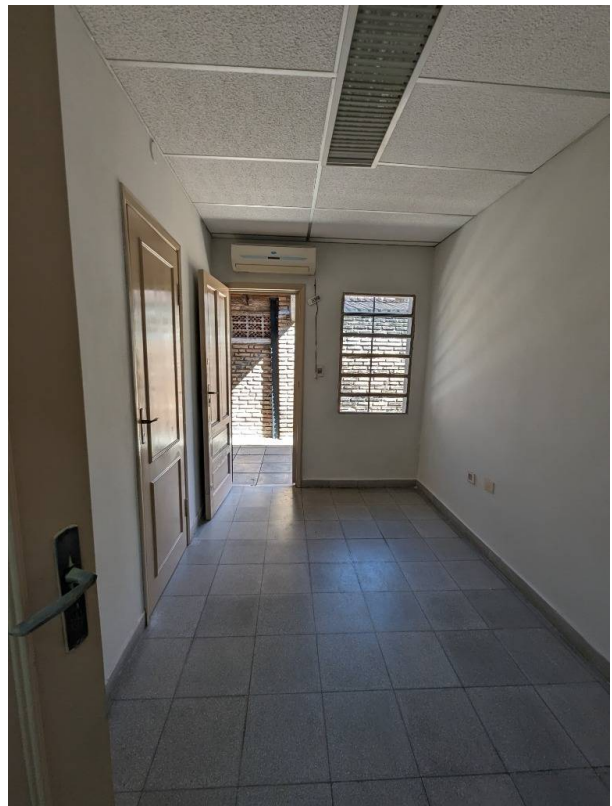
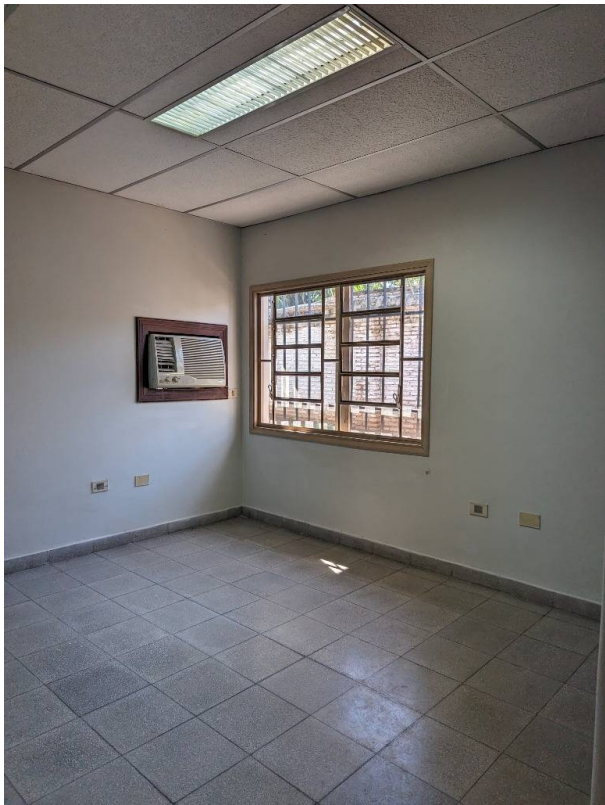


## Photo Catalog













**Tte. 2do. Benigno Villamayor 637 y Soldado Paraguayo, Virgen del Huerto, Asunción**  
**T 0984156670 | [alma@c21.com.py](mailto:alma@c21.com.py) | [www.century21.com.py](http://www.century21.com.py)**

Property subject to availability.

Price subject to change without notice.

The sending of this file does not commit the parties to the subscription of any legal document. The information and measurements are approximate and must be confirmed with the relevant documentation.

