



Andrés José Melgarejo
Duarte

CENTURY 21

Seven

ID: 23276
andres.melgarejo@c21.com.py
+595982555604



Shed for Sale

25 De Diciembre entre Mbocaya y Dionisio Ledesma San Lorenzo, Central



Sale: US\$ 1,485,000

Property type: Shed

Operation: Sale

- Land: 2,160.0 sqm
- Building: 2,000.0 sqm
- Front measurement: 36.0 m
- Background measurement: 60.0 m
- Bedrooms: 8
- Bathrooms: 5
- Parking lots: 28
- Stories: 2
- Kitchen: Kitchen
- Land: regular
- Condition: New
- Office area: 2
- environments: 10

- Tipo Vista: Avenida

Property status

State: New

Age: 2024

Description

INDUSTRIAL WAREHOUSE FOR SALE IN SAN LORENZO BARRIO VILLA INDUSTRIAL

Located 100 meters from Avenida Manuel Ortiz Guerrero

Adjacent to three streets

Strategic location 4 km from the center of San Lorenzo, 13 km from Asunción

DESCRIPTION OF THE INDUSTRIAL WAREHOUSE

36 meters. straight ahead for 24 meters. On the quiet side, it is 60 meters long with access to three streets.

It has a lot on the same block measuring 12 x 30 m 360 m² prepared for private parking. Totaling 2,160 m² of land with 2,000 m² covered in construction

Construction material

- * Rendered hollow brick masonry wall
- * Sliding metal gate (width x height)
- * Vertical enclosure made of 40 mm thermoacoustic sheet
- * Upper enclosure made of thermoacoustic sheet metal on the metal structure of pillars, beams and purlins
- * H°A° floor thickness of 15 cm

Electricity

- * 35500 W power
- * LED luminaire (reflectors)

Corporate office

- * 85 m² with fully air-conditioned areas on two levels
- * Factory warehouse area
- * 18m² meeting room
- * 5 SS HH (sexed)
- * Kitchen-dining room 7 m²
- * Cafeteria 9 m²
- * Show Room of 66 m²
- * Machine room 16 m²
- * CCTV monitoring room- ALARMS 10 M²
- * Dressing rooms - 16 m²
- * PCI - Includes 20,000 liter tank

Basic services

- * Ready to install according to customer needs

Parking lot

* Large parking lot 12 meters long by 30 meters. Background For approximately 12 vehicles, maneuvering yard in the front area.

Investment USD 1,485,000

Location

<https://maps.app.goo.gl/5c5LWj8AyN6SnYZo6>

Contact your trusted agent

Location

25 De Diciembre entre Mbocaya y Dionisio Ledesma , San Lorenzo, Central

References

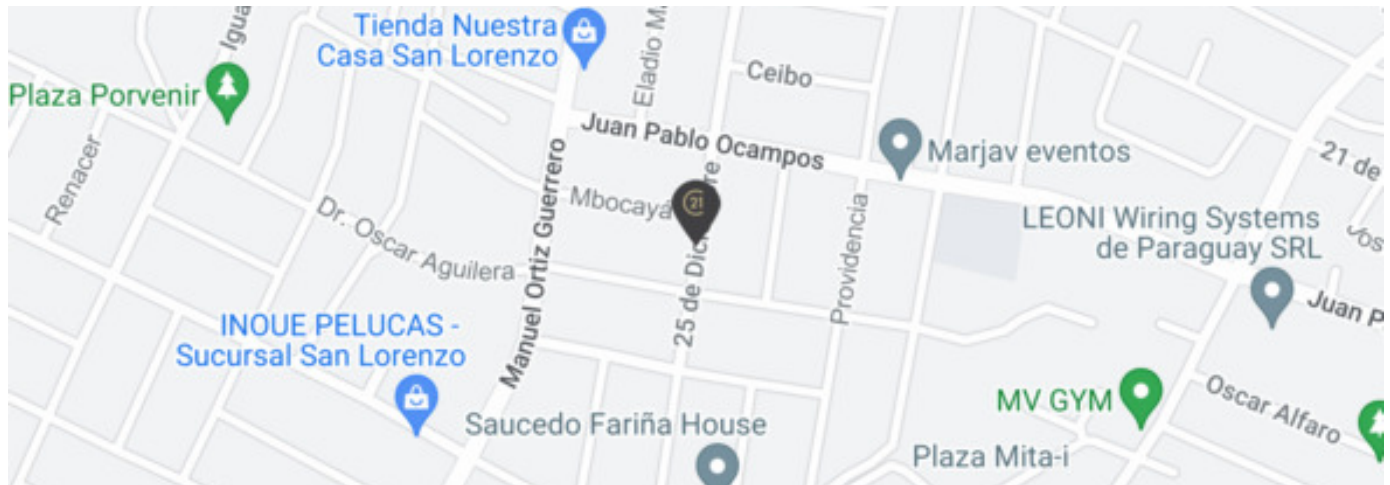
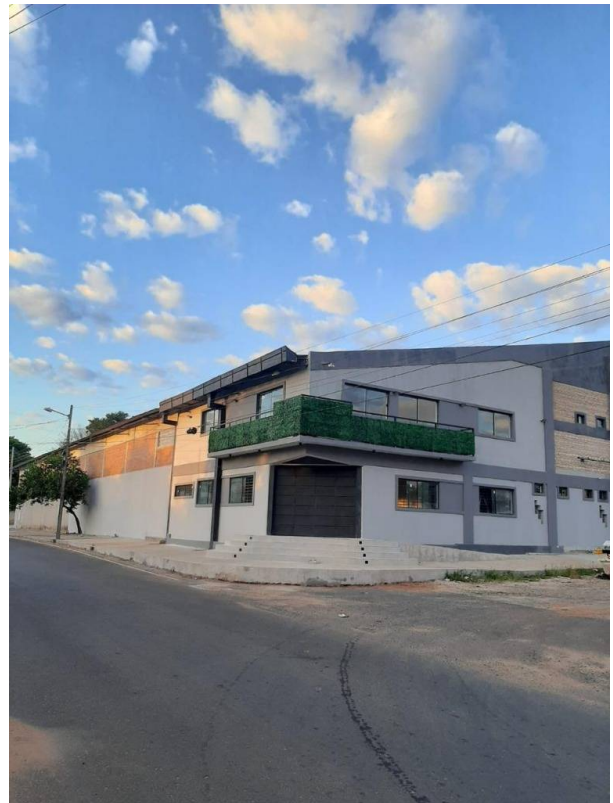
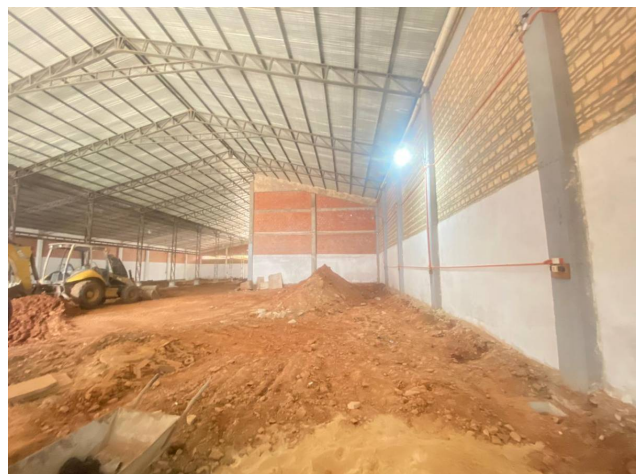
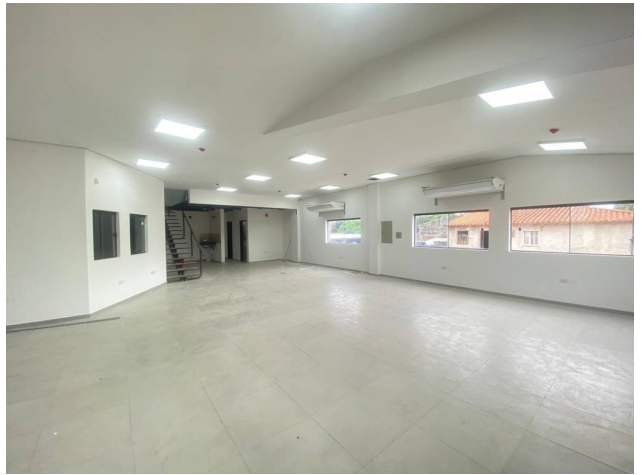
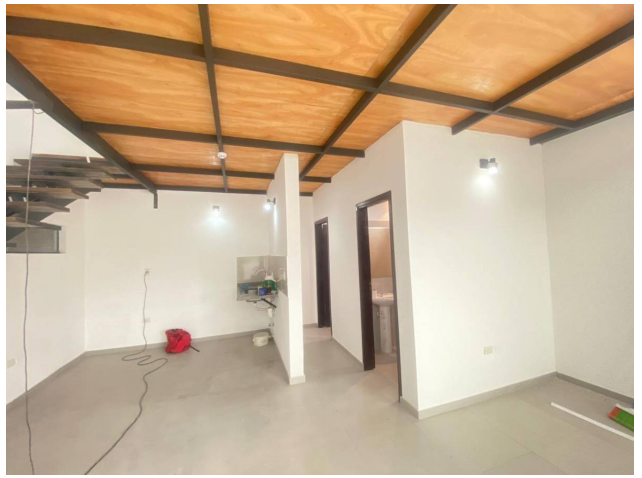
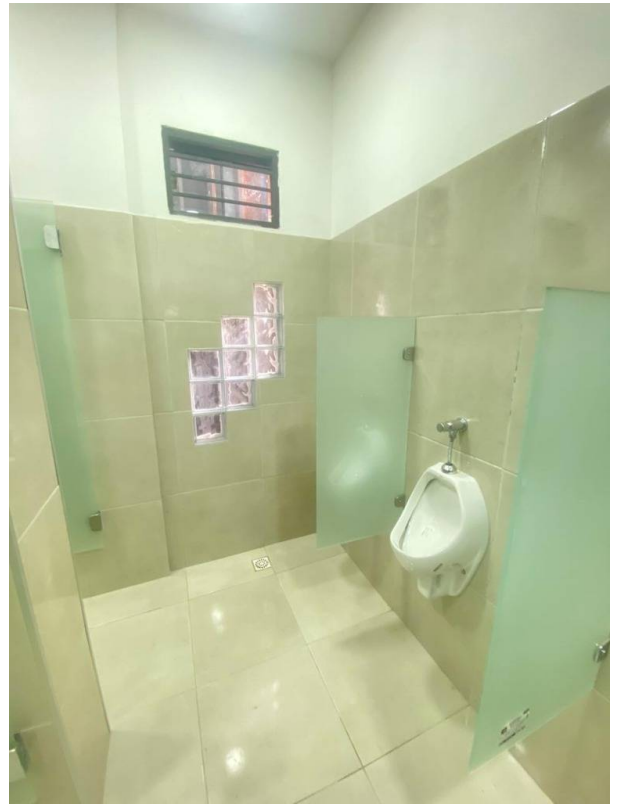
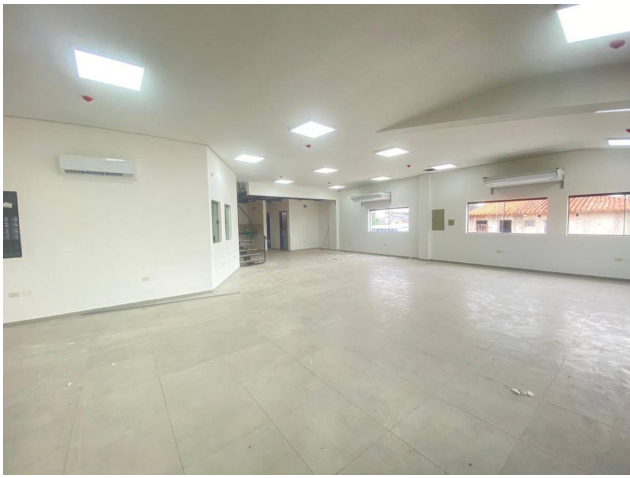


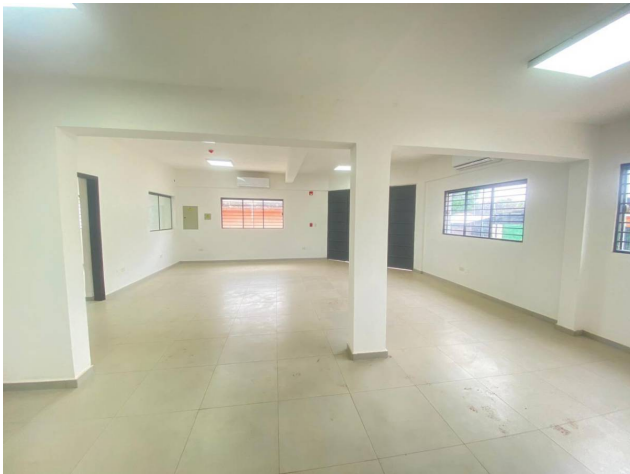
Photo Catalog













Dr. Bernardino Caballero 1240 entre Lillo y Teniente Vera, Ycuá Satí, Asunción
T +595 987 290003 | seven@c21.com.py | www.century21.com.py

Property subject to availability.

Price subject to change without notice.

The sending of this file does not commit the parties to the subscription of any legal document. The information and measurements are approximate and must be confirmed with the relevant documentation.